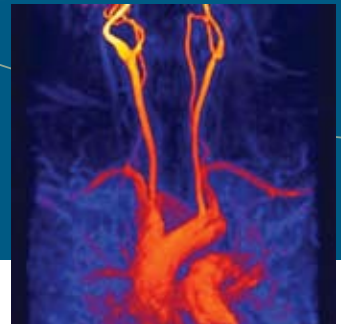


# INTERVENTIONAL RADIOLOGY

## *From Head to Toe*



**NOVEMBER 6-7, 2009**

Course Director: King C. Li, M.D., F.R.C.P.(C.), M.B.A.

Hotel ZaZa | Houston, Texas

Sponsored by The Methodist Hospital System

**Methodist**<sup>®</sup> The Methodist  
Hospital System<sup>™</sup>

LEADING MEDICINE<sup>®</sup>



## PROGRAM OVERVIEW

Interventional radiology is a rapidly growing field, constantly evolving and developing new techniques and addressing new challenges. Many new interventional radiology procedures have been introduced into clinical practice and there is a need for practicing radiologists and interventional radiologists to learn about these new procedures and be trained to provide these services to patients safely. The content of this program is designed to increase the competence of radiologists in performing state of the art interventional radiology procedures from head to toe.

## TARGET AUDIENCE

This course is intended for interventional radiologists and their collaborators in diagnostic radiology, oncology, vascular surgery, cardiology, and biomedical engineering. Medical professionals such as nurses, technologists, physician's assistants, nurse practitioners, and any others involved with image-guided intervention are also encouraged to participate.

## EDUCATIONAL OBJECTIVES

Upon completion of this course, the participant should be able to:

- Identify new techniques in thrombolytic therapy
- Enumerate the key points in performing spinal interventions
- Identify the key risk factors in neural endovascular interventional procedures
- Enumerate the different tumor ablation procedures

## EDUCATIONAL METHODS

Lectures, Case Presentations, Film/Slide Presentations, Syllabus, Question and Answer Sessions, and Lab Workshop (optional).

## EVALUATION

Evaluation by questionnaire will address program content, presentation, and possible bias.

## ACCREDITATION AND CREDIT DESIGNATION STATEMENTS

The Methodist Hospital System is accredited by the Accreditation Council for Continuing Medical Education to provide continuing medical education for physicians.

The Methodist Hospital System designates this educational activity for a maximum of 7.75 *AMA PRA Category 1 Credits*<sup>™</sup>. Physicians should only claim credit commensurate with the extent of their participation in the activity.

## OPTIONAL LABORATORY WORKSHOP

The Methodist Hospital System designates this educational activity for a maximum of 3.75 *AMA PRA Category 1 Credits*<sup>™</sup>. Physicians should only claim credit commensurate with the extent of their participation in the course.

## DISCLOSURE

In order to meet the requirements of the Accreditation Council for Continuing Medical Education it is the policy of The Methodist Hospital System that all individuals who are in a position to control the content of a CME course (course director, planning committee members, and faculty) disclose relevant financial relationships with commercial interests.

All identified conflicts of interest are managed to help ensure that the educational material is scientifically based, accurate, and objectively presented. Faculty are also required to disclose any discussions of off-label or investigational uses of any commercial products or devices not yet approved in the United States. Specific disclosure will be made to the participants prior to the educational activity.

## ADA STATEMENT



In compliance with the Americans with Disabilities Act, The Methodist Hospital System will make reasonable efforts to accommodate persons with disabilities at this course. Please call 713-441-4948 for further information, or if you need special assistance.

## FEES, REGISTRATION AND CONFERENCE INFORMATION

Refer to the registration form for the fee schedule. Your registration will not be processed until payment is received. Your registration will be confirmed. If you have not received confirmation at least five business days before the activity start date, contact the Office of Continuing Medical Education (OCME) immediately.

If you plan to register on-site, contact OCME at least 24 hours in advance to confirm activity status and space availability. The OCME reserves the right to limit the number of participants in an activity and will not be responsible for any expenses incurred by an individual whose registration is not confirmed and for whom space is not available.

## CANCELLATION/REFUND POLICY

Requests for registration refunds must be in writing and received by the Office of Continuing Medical Education (OCME) at least 10 business days before the course begins. The date the request is received by the OCME will be considered the cancellation date. Requests received after the refund deadline will not be processed. Cancellations are subject to a \$50 administrative fee deducted from the registration fee paid to cover guarantees and other expenses. Requests should be mailed to the OCME or faxed to 713-441-0589.

The OCME reserves the right to cancel activities, not less than 10 business days before the scheduled date, if extenuating circumstances make it necessary. Registrants will be notified at the contact number indicated on the registration form followed by written notification. If an activity is cancelled, OCME's liability is limited to the registration fee paid. Note: If payment is made by check, a social security number is required to process the refund.

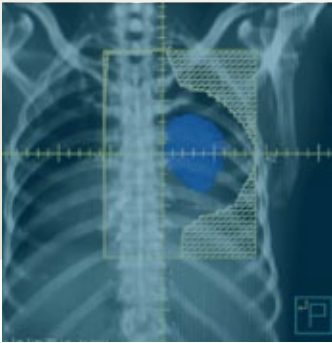
## FOR FURTHER INFORMATION CONTACT

The Methodist Hospital System  
Office of Continuing Medical Education  
6565 Fannin, MGJ9-004  
Houston, TX 77030

Phone: 713-441-4971  
Fax: 713-441-0589  
E-mail: [cme@tmhs.org](mailto:cme@tmhs.org)



Visit our Website located at [www.methodistcme.com](http://www.methodistcme.com) for information about other Methodist Hospital CME activities.



# INTERVENTIONAL RADIOLOGY

## *From Head to Toe*

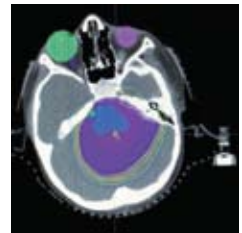
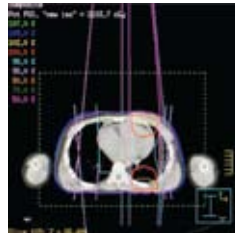
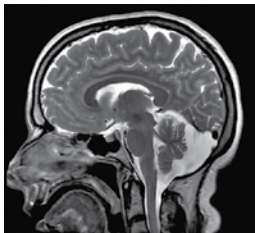
FRIDAY, NOVEMBER 6

- 7:00 - 8:00 A.M. Registration and Continental Breakfast
- 8:00 - 8:15 **Welcome, Course Introduction, and Overview**  
*King C. Li, M.D., F.R.C.P.(C.), M.B.A.*
- 8:15 - 9:00 **Update on Endovascular Interventional Neuroradiology**  
*Richard P. Klucznik, M.D.*
- 9:00 - 9:45 **What is on the Horizon for Endovascular Interventional Neuroradiology?**  
*Alexander Norbash, M.D., M.H.C.M.*
- 9:45 - 10:00 Questions and Discussions
- 10:00 - 10:15 Break
- 10:15 - 11:00 **Update on Image Guided Tumor Ablations**  
*Jett R. Brady, M.D.*
- 11:00 - 11:40 **New Horizons for Oncologic Interventional Radiology**  
*David Shin-Kuo Lu, M.D.*
- 11:45 - 12:00 P.M. Questions and Discussions
- 12:00 - 1:00 Lunch
- 1:00 - 1:45 **TIPS in the 21st Century**  
*George Soltes, M.D.*
- 1:45 - 2:30 **Update on Vascular Image Guided Interventions**  
*Douglas M. Coldwell, Ph.D., M.D.*
- 2:30 - 2:45 Questions and Discussions
- 2:45 - 3:00 Break
- 3:00 - 3:45 **Update on Image Guided Spinal Interventions**  
*Hani Haykal, M.D.*
- 3:45 - 4:30 **Molecular Image Guided Therapy**  
*King C. Li, M.D., F.R.C.P.(C.), M.B.A.*
- 4:30 - 4:45 Questions and Discussions
- 4:45 Adjourn

## SATURDAY, NOVEMBER 7: LABORATORY WORKSHOP

Additional registration required (see registration form). Each one hour demonstration will be repeated three times so that participants can potentially attend all three demonstrations.

7:30 A.M.	Transportation to The Methodist Hospital for Practical Demonstration
8:00 - 8:30	Registration and Breakfast
8:30 - 9:00	Hands-on Laboratory Session Overview
9:00 - 10:00	<b>Rotation Station 1: <i>Spinal Intervention</i>, Hani Haykal, M.D.</b>
10:00 - 11:00	<b>Rotation Station 2: <i>Tumor Ablation</i>, Jett R. Brady, M.D.</b>
11:00 - 12:00 P.M.	<b>Rotation Station 3: <i>Endovascular Neuro-intervention</i>, Richard P. Klucznik, M.D.</b>
12:00 - 12:15	Evaluation and Adjourn
12:15	Transportation to Hotel



### PROGRAM DIRECTOR

**King C. Li, M.D., F.R.C.P.(C.), M.B.A.**

*Course Director*

*Chair*

Department of Radiology  
The Methodist Hospital  
Houston, Texas

*Professor of Radiology*

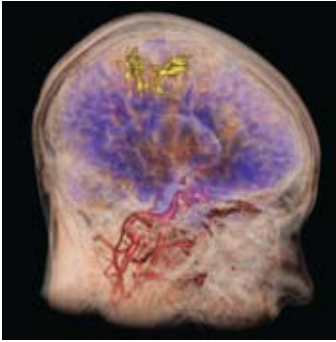
M.D. Anderson Foundation Distinguished Chair  
Radiology and Imaging Sciences  
Weill Cornell Medical College

*Adjunct Professor*

Department of Bioengineering  
Rice University

*Adjunct Professor*

Department of Mechanical Engineering  
University of Houston



## SPEAKING FACULTY

### **Jett R. Brady, M.D.**

*Assistant Professor*  
Department of Radiology  
The Methodist Hospital  
Houston, Texas

### **Douglas M. Coldwell, Ph.D., M.D.**

*Professor*  
Department of Radiology  
Division of Vascular and Interventional Radiology  
University of Texas Southwestern Medical School  
Dallas, Texas

### **Hani Haykal, M.D.**

*Director*  
Department of Neuroradiology  
The Methodist Hospital  
Houston, Texas

### **Richard P. Klucznik, M.D.**

*Medical Director*  
The Neurological Institute  
The Methodist Hospital  
*Clinical Associate Professor*  
Department of Radiology  
Weill Cornell Medical College  
Houston, Texas

### **David Shin-Kuo Lu, M.D.**

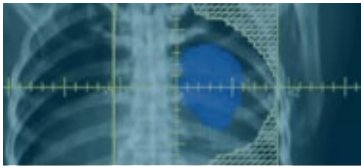
*Professor*  
Department of Radiology  
*Director*  
CT and Cross Sectional IR  
*Director*  
UCLA Liver Tumor Ablation Program  
*Section Chief*  
Cross Sectional Interventional Radiology  
David Geffen School of Medicine  
University of California, Los Angeles  
Los Angeles, California

### **Alexander Norbash, M.D., M.H.C.M.**

*Professor and Chairman*  
Department of Radiology  
Boston University School of Medicine  
Boston, Massachusetts

### **George Soltes, M.D.**

*Clinical Assistant Professor*  
Department of Radiology  
The Methodist Hospital  
Houston, Texas



# INTERVENTIONAL RADIOLOGY

## *From Head to Toe*

### **FOUR WAYS TO REGISTER:**

Phone: 713-441-4971  
Fax: 713-441-0589  
Online: [www.methodistcme.com](http://www.methodistcme.com)

Mail: The Methodist Hospital  
Office of Continuing Medical Education  
Attention: Interventional Radiology (#135)  
6565 Fannin, MGJ9-004  
Houston, TX 77030

### **PAYMENT AND FEES**

- |   |       |   |       |
|---|-------|---|-------|
| <input type="checkbox"/> Physicians – Lecture & Lab                 | \$500 | <input type="checkbox"/> Healthcare Professional – Lecture only | \$150 |
| <input type="checkbox"/> Physicians – Lecture only                  | \$300 | <input type="checkbox"/> Industry – Lecture only                | \$300 |
| <input type="checkbox"/> Healthcare Professional –<br>Lecture & Lab | \$250 |   |       |
- Note: Registration for lab sessions is limited to ensure an optimal learning experience. Register early to guarantee your space.*

*Please print clearly*

Last Name: \_\_\_\_\_ First Name: \_\_\_\_\_ Credentials: \_\_\_\_\_

Organization: \_\_\_\_\_

Specialty: \_\_\_\_\_ Title/Position: \_\_\_\_\_

Address: \_\_\_\_\_

Address: \_\_\_\_\_

City: \_\_\_\_\_ State: \_\_\_\_\_ ZIP: \_\_\_\_\_

Office Phone: \_\_\_\_\_ Office Fax: \_\_\_\_\_

E-mail: \_\_\_\_\_

Do *not* include me in future mailing lists

Check or Money Order (made payable in U.S. funds to *The Methodist Hospital*)

Credit Card: *I authorize The Methodist Hospital to charge my:*  Visa®  MasterCard®  AMEX®

Credit Card No. \_\_\_\_\_ Exp. Date: \_\_\_\_\_

Name on the Card: \_\_\_\_\_

Authorized Signature: \_\_\_\_\_

Special dietary needs (specify): \_\_\_\_\_

### **CONFERENCE LOCATION AND ACCOMMODATIONS**

#### **Hotel ZaZa**

5701 Main St.  
Houston, Texas 77005  
713-526-1991

[www.hotelzaza.com/Houston](http://www.hotelzaza.com/Houston)

**RESERVATIONS:** Please identify yourself with *The Methodist Hospital Interventional Radiology Conference* when making reservations in order to benefit from the special group rate (\$199 single or double). A limited number of rooms have been reserved at the special rate on a space available basis. The deadline to receive the special rate is October 10, 2009 unless the room block has already been filled. **RESERVE YOUR ROOM EARLY.**